



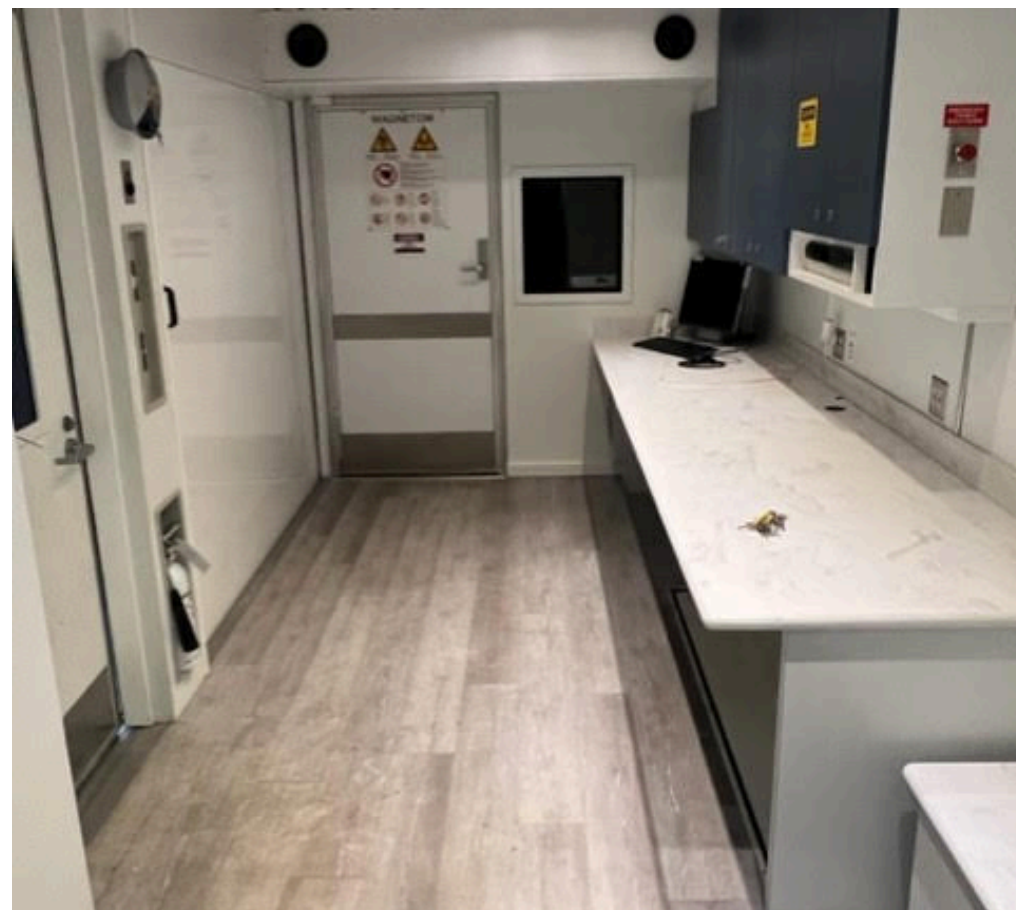
COL

IMAGING SOLUTIONS

Siemens 18ch Espree 1.5T WideBore Mobile MRI



Siemens 18ch Espree 1.5T WideBore



Leasing Terms

- 24 Months / \$28,000 month
- 36 Months / \$27,000 month
- 48 Months / \$26,000 month
- 60 Months / \$25,000 month

Services Provided

- Parked Full Time MRI Service
- Full-Service Coverage on all MRI Equipment, HVAC, Cryogens and all Mechanical components on the Mobile Coach
- On Site Applications Training Provided
- Remote Technical Support: Application Specialists are available by phone 24 hours/day to assist your Tech(s) with any issues or questions
- 92% Equipment Uptime Monthly Guarantee

Equipment Specifications

- 70cm Wide Bore Magnet
- Z Engine 33mTm 100 SR (56mTm, 173 SR Effective)
- VB19B Software
- Z420 Workstation
- TIM 76x18
- Table Weight Limit 600 lbs.

Software Options

TIM Application Suite:

Neuro

Body

Angio

Cardiac

Ortho

Onco

Pediatric

Breast

Scientific

3D MAIN

3D MIP

3D MPR

3D SSD

3D Usage License

Pat Extensions

Magnetom Espree

Advanced Cardiac

Argus Viewer

MDDW

Phoenix Zip

Syngo general license

Syngo Remote Assist

Worklist

3D Distortion Correction

BLADE

CISS & DESS

Composing

Inline Composing

I-Class

Image Filter Software

Inline Diffusion

Inline perfusion

Argus function

Flow quantification

MPPS

Idea

Expert I

Argus 4DVF

Inline VF

Expert I

Optimized Protocols For EC

USA License

COILS

Body Matrix

Head Matrix

Neck Matrix

Spine Matrix

PA Matrix F

CP Flex small

Endorectal

Extremity MAI