

COL

IMAGING SOLUTIONS

**Vision U Universal Auto-Positioning U-Arm DR
Modular System**



VISION U UNIVERSAL AUTO-POSITIONING U-ARM DR SYSTEM



Services Provided

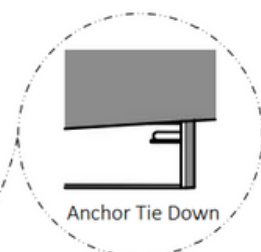
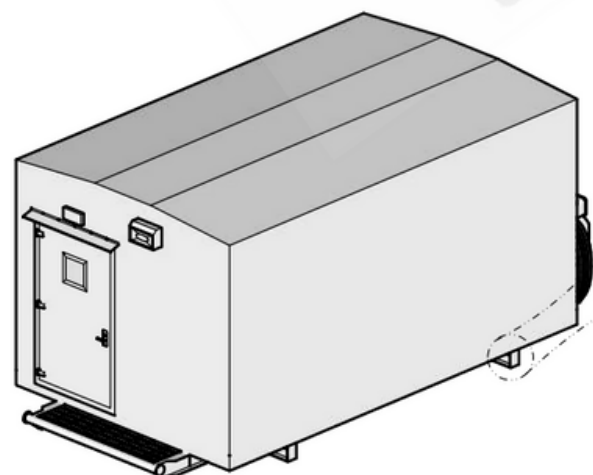
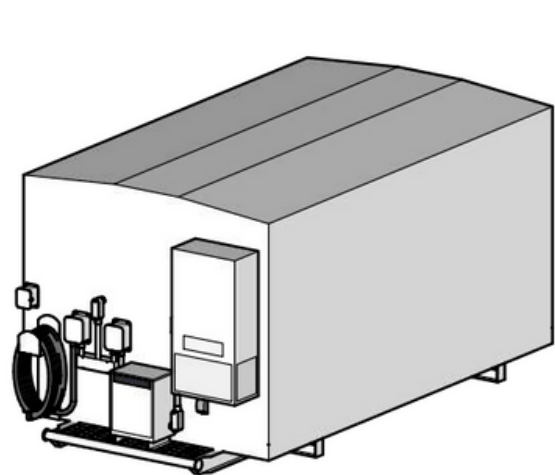
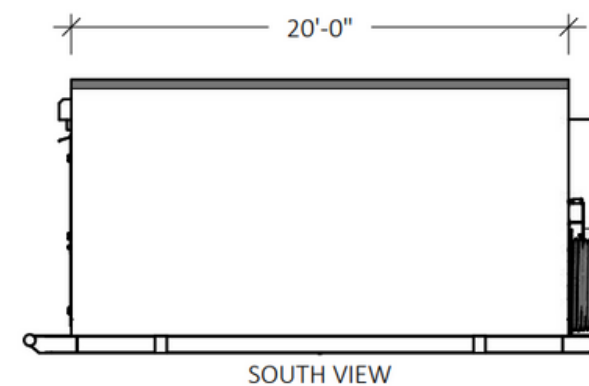
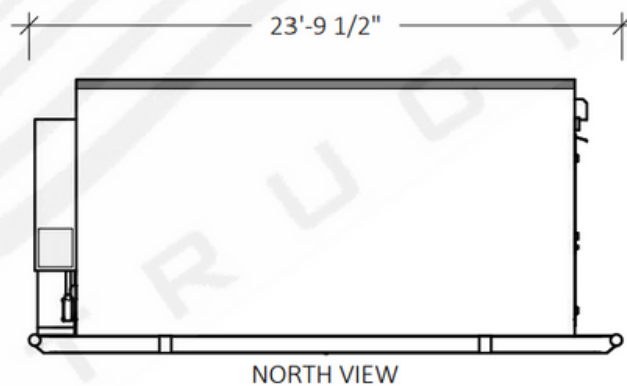
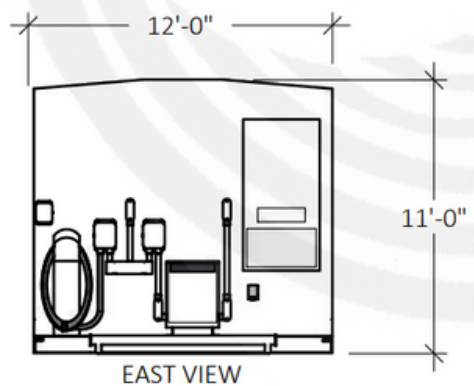
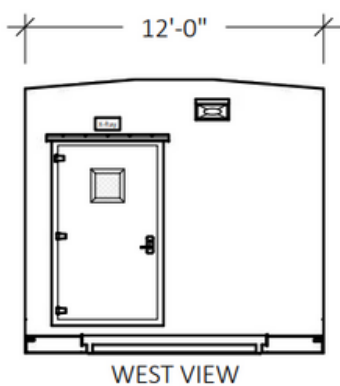
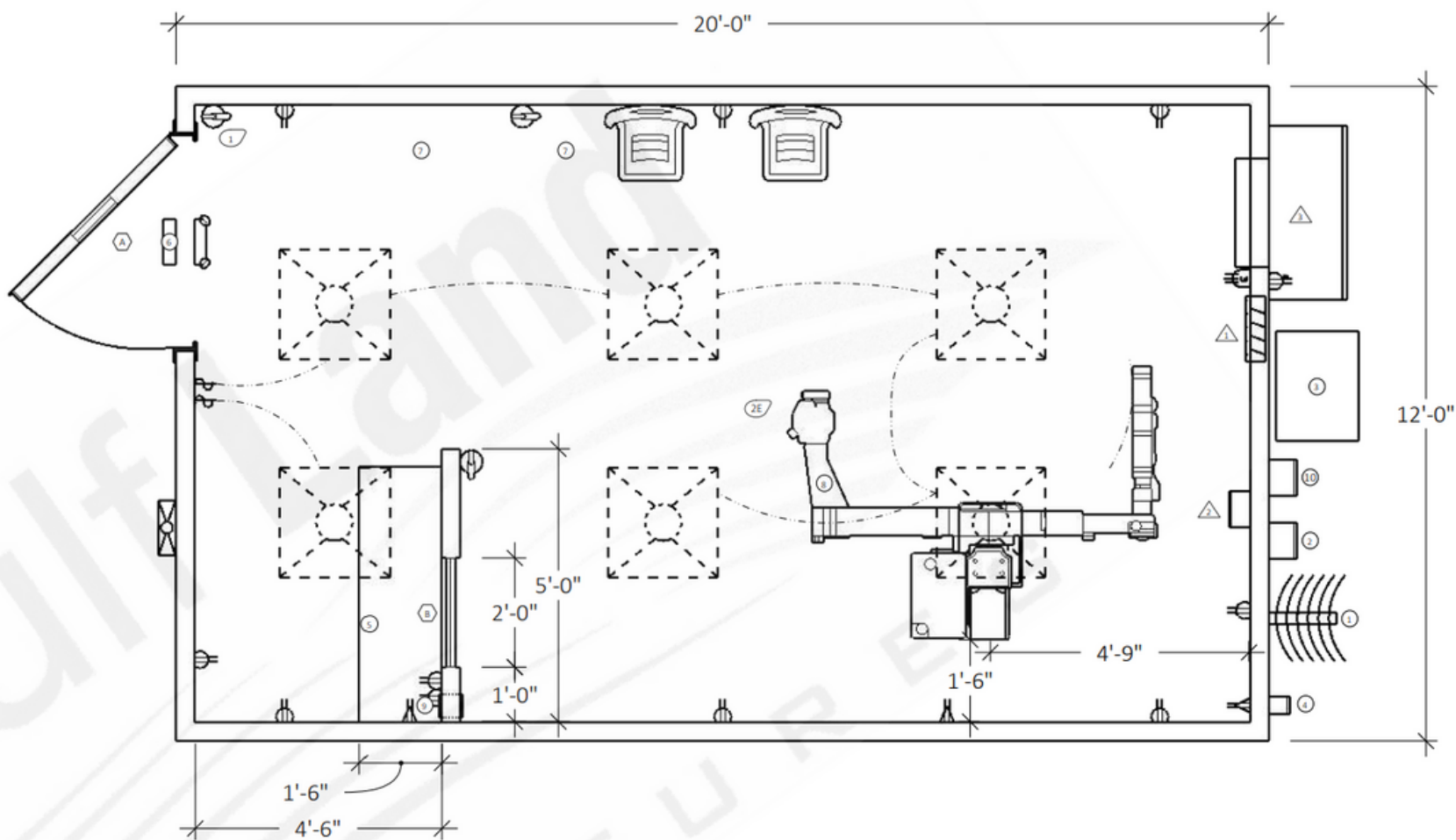
- Full-Service Coverage on all DR Equipment, HVAC, and all mechanical components on the modular building
- On Site Applications Training Provided
- Remote Technical Support: Application Specialists are available by phone 24 hours/day to assist your Tech(s) with any issues or questions
- 92% Equipment Uptime Monthly Guarantee
- Delivery and Installation

SHIELDED MODULAR BUILDING FLOOR PLAN



APPROVED (PROCEED AS IS)	<input type="checkbox"/>
APPROVED AS NOTED (REVISE AND RESUBMIT)	<input type="checkbox"/>
REJECTED (DO NOT PROCEED, RESUBMIT)	<input type="checkbox"/>
FOR INFORMATION ONLY	<input type="checkbox"/>
Date:	_____
Customer Signature	_____

OUTFITTING SCHEDULE				
EXTERIOR WALL	FLOOR	BASE	CEILING	PARTITION WALL
1/8" Fiberglass, 1/2" Plywood, R-13 Batt Insulation, 2x4 Studs (16"O.C.), 1/8" Stainless Steel Clad Rex	Luxury Vinyl Plank, 3/4" Plywood, 2x6 Joist (16"O.C.)	3" Stainless Steel	24"x24" Metal Grid With Ceiling Tile, R-30 Batt Insulation, 2x8 Joist (16"O.C.), 1/2" plywood, 1/8" Fiberglass	1/8" Stainless Steel Clad Rex, R-13 Batt Insulation, 2x4 Studs (16"O.C.), 1/8" Stainless Steel Clad Rex



DOOR/WINDOW SCHEDULE		
MARK	QTY	DESCRIPTION
(A)	1	4-0 x 6-8 1/8" Stainless Steel with 12" X-ray Window
(B)	1	24"W x 30"H 54"AFF Window X-ray Glass (Customer)

FIRE & GAS SCHEDULE		
MARK	QTY	DESCRIPTION
(1)	2	Fire Extinguisher (Customer Supplied)
(2)	1	Smoke Detector 120V w/Battery Backup

FURNISHINGS SCHEDULE		
MARK	QTY	DESCRIPTION
(1)	1	Power Cable Rack
(2)	1	Power Disconnect 480V 3 Phase 200 AMP
(3)	1	Transformer 480V
(4)	1	Data Junction Box
(5)	1	Countertop Desk (18" x 55")
(6)	1	X-Ray In Use Indicator Light (Customer Supplied)
(7)	2	Guest Chair (Optional)
(8)	1	Vision U (Customer Supplied)
(9)	1	Wall Chase 5" x 5" (At floor level)
(10)	1	Service Disconnect 240/120V 1 Phase 50 AMP

ELECTRICAL/HVAC SCHEDULE		
MARK	QTY	DESCRIPTION
(1)	1	Panel 208/120V 1-ph 100 Amp (Non-Classified)
(2)	1	Disconnect 480V 3-ph 125 Amp (Non-Classified)
(3)	1	HVAC Bard 2-Ton Unit (Non-Classified)

REVISION HISTORY		
REV	DATE	DESCRIPTION
1	07/15/22	Issued for construction
0	07/12/22	Issued for construction

Gulf Land Structures, LLC
 PO Box 52605
 Lafayette, LA 70505-2605
 4100 Cameron Street
 Lafayette, LA 70506
 (337) 993-9858

Designed By: KED Date: 06/15/22
 Drawn By: KED Date: 06/15/22
 File Name: CIS 1000-01-C X-Ray Mobile Unit 12x20

12' x 20' Fiberglass Building
 COL Imaging Solutions
 X-Ray Mobile Unit
 General Arrangement

Page A-1.0
 REV 1

NOTE:
 Building Weight 17,000 lbs.

Equipment Specs

UNIVERSAL AUTO-POSITIONING U-ARM STAND

- 5-WAY MOTORIZED MOVEMENT: ELEVATION, 2XSID, ROTATION, TILT
- TUBE SIDE STAND CONSOLE AND REMOTE-CONTROL UNIT
- CONFIGURABLE, EXAM-SPECIFIC PROGRAM AUTO POSITIONING.
- DIGITAL DISPLAY OF SID, TUBE, AND DETECTOR ANGULATIONS.
- COMPACT SMART-BUCKY UNIT FOR 4343 FIXED DETECTORS WITH GRID TYPE DETECTION, LED INDICATION

TOUCHSCREEN DISPLAY LOCATED ON X-RAY TUBE

- 10.1" COLOR SCREEN DIAGONAL, WEIGHS LESS THAN 1KG
- INFORMATION DISPLAY AND CONTROLS: GENERATOR PARAMETERS, STAND POSITIONING, SOURCE-TO-SOURCE DISTANCE, TUBE ANGLE, INTERLOCK, FILTERING
- GENERATOR EXPOSURE CONDITIONS SETTINGS KV, MAS, AEC
- WORKLIST MANAGEMENT AND PROCEDURE SELECTION
- PATIENT NAME AND GENDER DISPLAY TO ELIMINATE ID MISS-MATCH
- POSITIONING INFORMATION DISPLAY: SOURCE-TO-IMAGE DISTANCE, TUBE ANGLE, INTERLOCK
- SYSTEM ERROR DISPLAY AND RESET
- REMOTE CONTROL OF SYSTEM POSITIONING
- STAND AUTO-POSITIONING WITH TECHNIQUE/BODY REGION SELECTION

VISION 65KW X-RAY POWER PACK

- 65KW HF GENERATOR EMD EPSILON, (240KHZ) HIGH-SPEED, LOW SPEED STARTER
- 10-800MA, 40-150KV, EXPOSURE TIME: 1-10.000MS
- 400KHU RADIOGRAPHY TUBE, VAREX RAD 14/LEO, FOCAL SPOTS: 0.6/1.2MM
- AUTOMATIC COLLIMATOR OPTICA 30, WITH LIGHT INDICATION AND MOTORIZED FILTRATION
- AEC: 5 FELD IONIZATION CHAMBER, 12M HV CABLES, PAIR X-RAY GRID, AI, 10:1, 215LPI, FD 150 CM (REMOVABLE)

AVANSE DR IMAGING SYSTEM WITH STAND CONTROL

- VISARIS 1717V3 CSL FLAT PANEL DETECTOR IN FIXED MODE
- PIXEL SIZE 139UM
- A/D: CONVERSION 16-BITS
- HIGH PERFORMANCE PC, 23" FULL HD LCD/TFT MONITOR
- VXS RADIOGRAPHY INTEGRATION SYSTEM, UPS FOR WORKSTATION

AVANSE DR ACQUISITION AND IMAGING SOFTWARE

- PATIENT REGISTRATION
- INTERACTIVE EXAM WORKLIST
- INTEGRATED IMAGE ACQUISITION
- STAND POSITIONING CONTROL SOFTWARE (APR POSITIONING)
- ADVANCED POST-PROCESSING AND IMAGE MANIPULATION
- IMAGE ANNOTATION AND MEASUREMENTS
- DICOM MODALITY WORKLIST, DICOM MPPS, LOCAL STORAGE, DICOM COMPRESSION
- DICOM PACS COMMUNICATION
- DICOM CD BURNING WITH DISTRIBUTION DICOM VIEWER ON EACH CD, DICOM, AND PS PRINT SYSTEM CONFIGURATION AND SUPPORT SOFTWARE
- AVANSE SERVICE AND SET-UP ENVIRONMENT
- APR, IMAGING USER, AND DICOM CONNECTION ADMINISTRATION
- DETECTOR CALIBRATION MODULE
- Q/A MODULE
- X-RAY JOURNAL
- MULTI-LANGUAGE SUPPORT
- REMOTE SYSTEM SUPPORT

PORTABLE PATIENT (TROLLEY) TABLE

- 2-WAY HANDGRIPS, AI ACCESSORY RAILS,
- MAX PATIENT LOAD 200KG
- TABLE HEIGHT 676 MM
- PATIENT TABLETOP: PLASTIC LAMINATE, 6MM
- X-RAY ATTENUATION: ~1MM AI EQUIVALENT
- TABLETOP DIMENSIONS 2006 X 640MM

MOTORIZED PROTEC PROGNOST XPE MOBILE X-RAY TABLE

- MOTOR DRIVEN HEIGHT ADJUSTMENT BETWEEN 23.5" (60CM) AND 34" (86CM)
- 110-120V OR 220-240V POWER FOR TABLE
- COMPOSITE MATERIAL TABLETOP WITH CARBON FIBER OPTION
- MAX PATIENT LOAD 550LBS (250KG)
- COMPATIBLE WITH FILM CASSETTES, CR IMAGING PLATES, AND DR FLAT PANEL DETECTORS
- REAR BRAKES
- LONG REAR RAIL
- 4-WAY FLOAT TABLE-TOP FOR OPTIMAL PATIENT POSITING

IMAGE STITCHING MODULE

- FULL-SIZE STITCHING POSITIONING TROLLEY WITH WHEEL LOCKS AND RADIO-OPAQUE RULER
- POSITIONING PROGRAMS FOR AUTO-STITCHING, ROTATION/TRANSLATION MODES
- STITCHING IMAGING SOFTWARE MODULE WITH AUTO AND MANUAL STITCHING FUNCTIONS